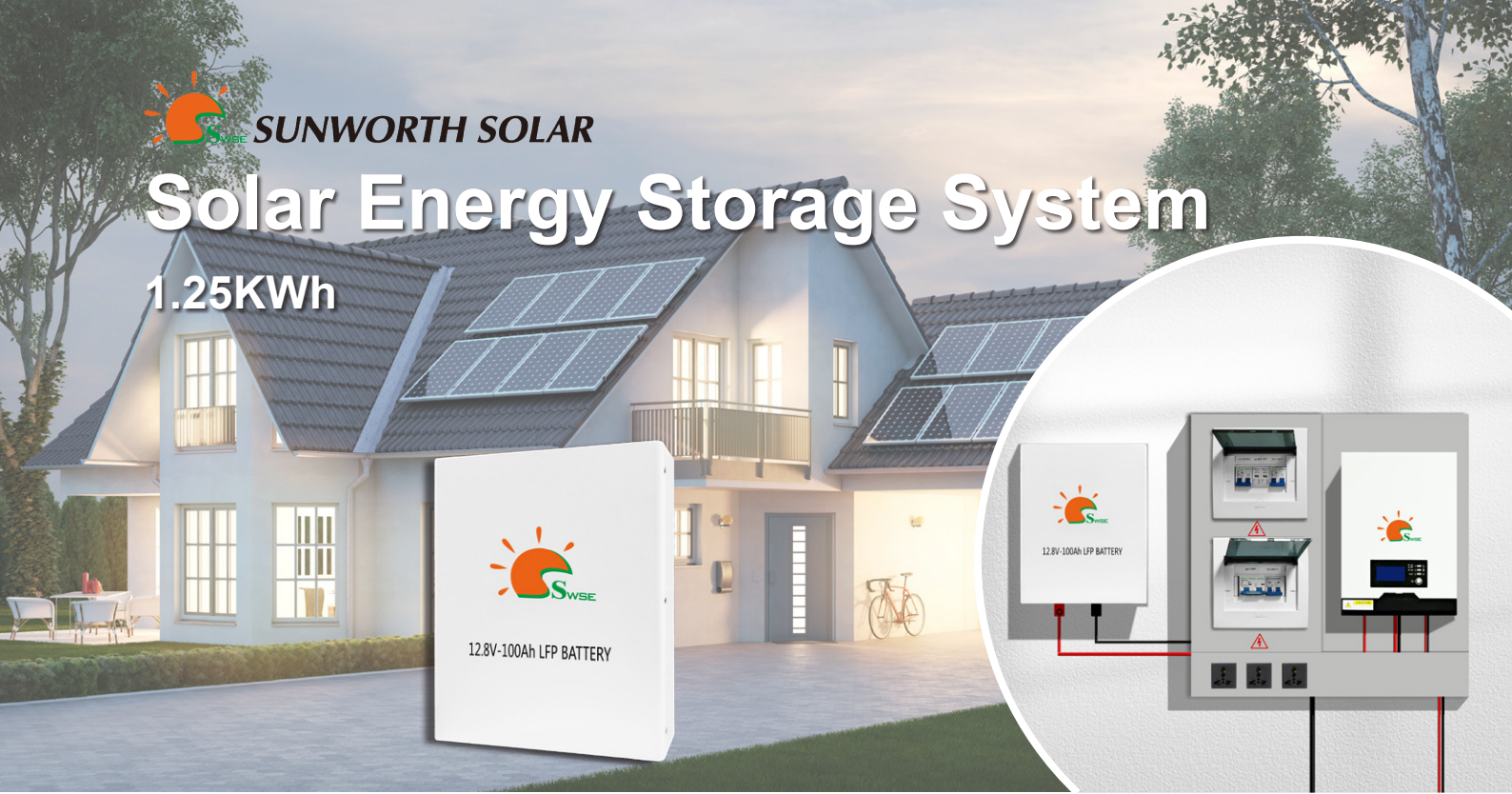


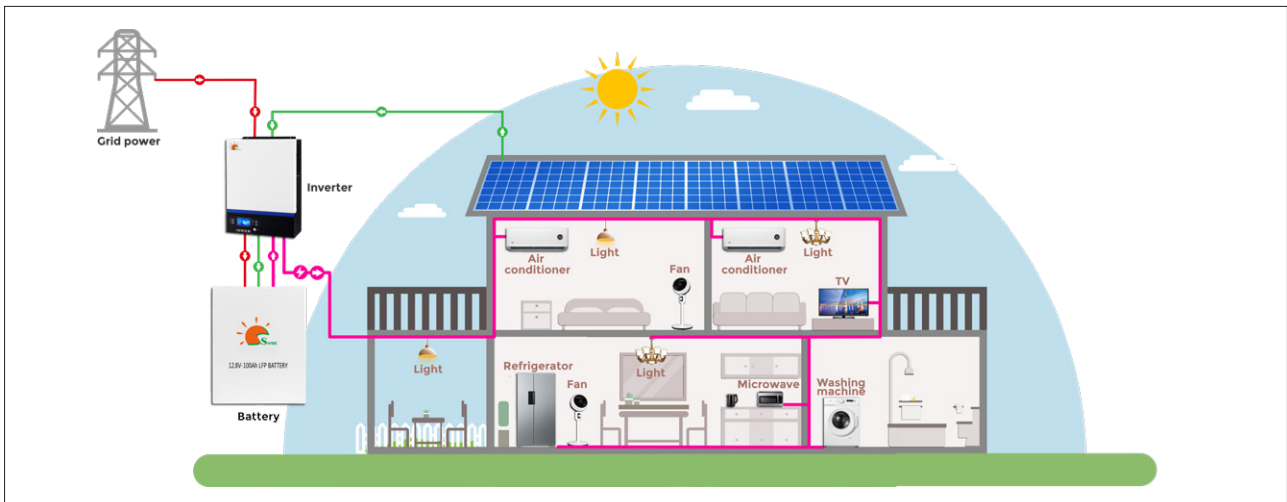
Solar Energy Storage System

1.25KWh

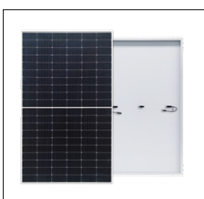


■ Features

- Smart Inverter with Built-in MPPT Tracker.
- Enhanced AC/Solar Charger at 1C.
- Programmable Supply Priority: PV, Battery, or Grid.
- User-Adjustable Battery Charging Current.
- Compatible with Utility and Generators.
- Long-Life LFP Lithium Battery.



■ Configuration



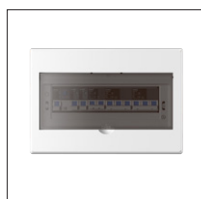
Solar Panel



Hybrid Inverter



LFP Battery



Distribution Box



Cables



Mounting Bracket



■ Specification

Model No.	SESS-1.25KWh	
Nominal output power	1000W	
Solar power input	500Wp	
Battery capacity	1.28KWh	
Battery type	LFP(LiFePO ₄)	
Hybrid Inverter Specification		
Rated power	1000VA/1000W	
Surge power	2000VA	
Waveform	Pure sine wave	
AC voltage regulation (batt.mode)	230VAC±5%	
Inverter efficiency(peak)	90%	
Transfer time	10ms(For personal computers) / 20ms (For home appliances)	
AC input voltage	230Vac	
Frequency range	50Hz / 60Hz (Auto sensing)	
Maximum PV array open circuit voltage	102Vdc	
PV array MPPT voltage range	15-80Vdc	
Maximum PV array power	500Wp	
Maximum solar charge current	40A	
Maximum AC charge current	20A	
Relative humidity	5% to 95% (Non-condensing)	
Operating temperature	-10℃ to +50℃	
Dimension	88x225x320mm	
Net weight	4.5 kg	
Battery		
Rated voltage	12.8V	
Capacity	100Ah	
Full vcharge voltage	14.6V	
Full discharge voltage	10.8V	
Charge current	20A(0.2C)	
Max. charging current	100A	
Max. discharging current	100A	
Protection	PCM,Breaker	
Dimension	300*370*120mm	
Net weight	12 kg	
Other		
Relative humidity	5% to 95%	
Operating temperature	-10℃ to +50℃	
Storage temperature	-15℃ to +60℃	

■ Common Consumption (Ref.)

Individual device	Power(Ref.)	Qty	Working hours per day	Power consumption per day
LED Light / LED	5W	1	6h	30Wh
TV(50')	75W	1	4h	300Wh
Computer	60W	1	4h	240Wh
Fan	20W	1	6h	120Wh
Fridge	100W	1	24h	800Wh
Fax	150W	1	0.5h	75Wh
Washing machine	300W	1	0.5h	150Wh
Printer	250W	1	0.5h	125Wh
Electric kettle	800W	1	0.5h	400Wh

